

Thermal Transfer Overprinter

DC24A/DC24A-E

App

Instructions

Rev.1.1

CONTENTS

Statement.....	3
1 INSTALLATION.....	4
2 BASIC OPERATING INSTRUCTIONS.....	7
2.1 Connect the device to the DC24A overprinter via Bluetooth.....	7
2.2 Control printer.....	9
2.3 Coding editor.....	13
2.4 Firmware Upgrade.....	33

Statement

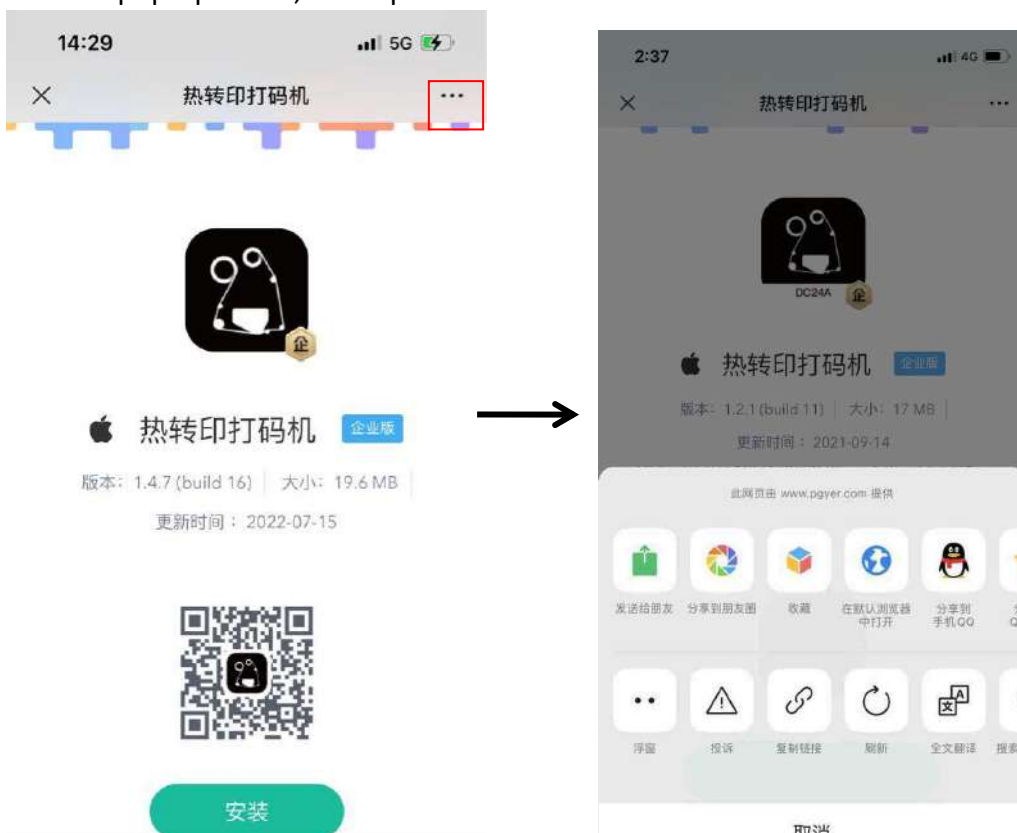
The contents of this manual shall not be changed without consent. Our company reserves the right to change products in technology, parts, software and hardware. If users need further information related to the product, you can contact us. Without the written permission of our company, any chapter of this manual shall not be copied or transmitted in any form or by any means.

1 INSTALLATION

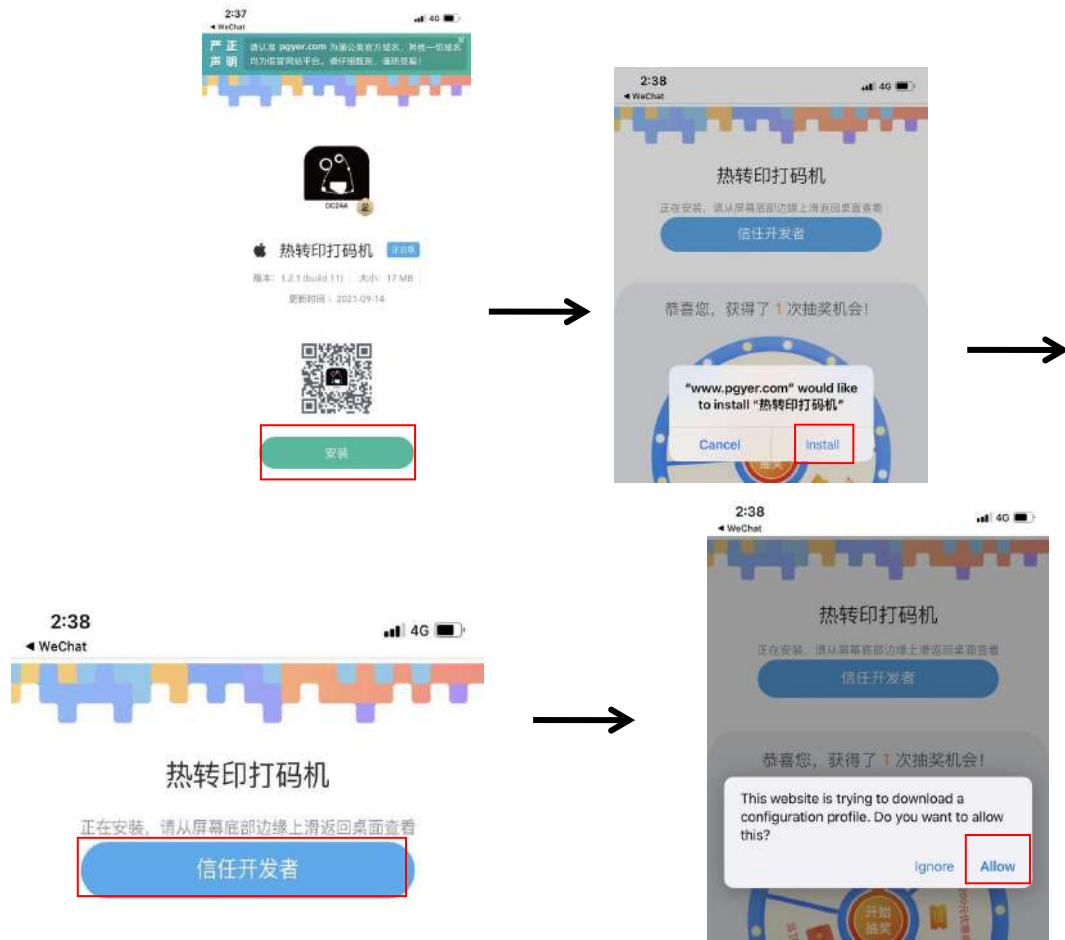
1. Use the device that needs to be connected to overprinter to scan the QR code below, and select the download channel according to your device (take iPhone for example):



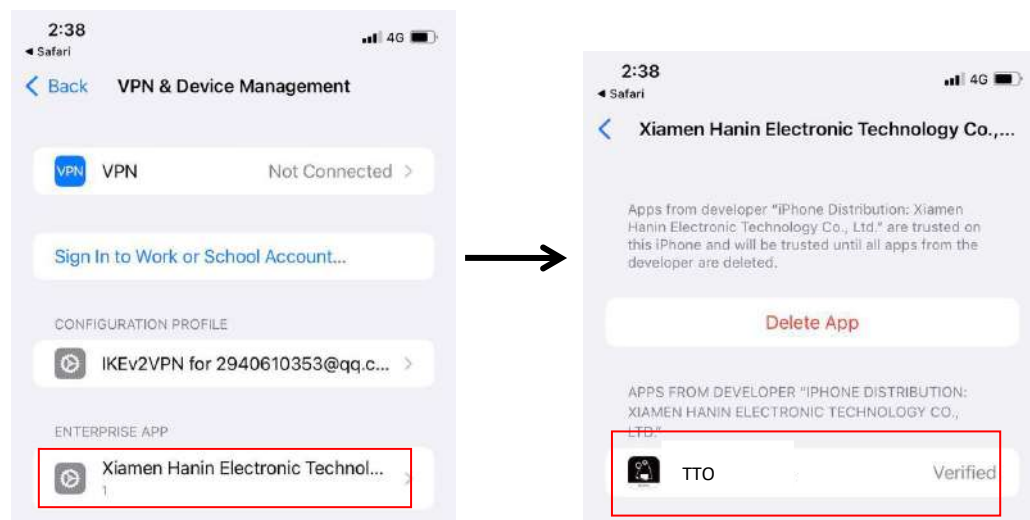
2. According to the page prompt, click the button "..." in the upper right corner. Then in the pop-up menu, click open in browser to install.



3. Click “Install”-> “Allow”.



4. After the download is successful, the following “VPN & Management” page will be displayed. Then click “Xiamen Hanin Electronic Technol...” -> “TTO”.



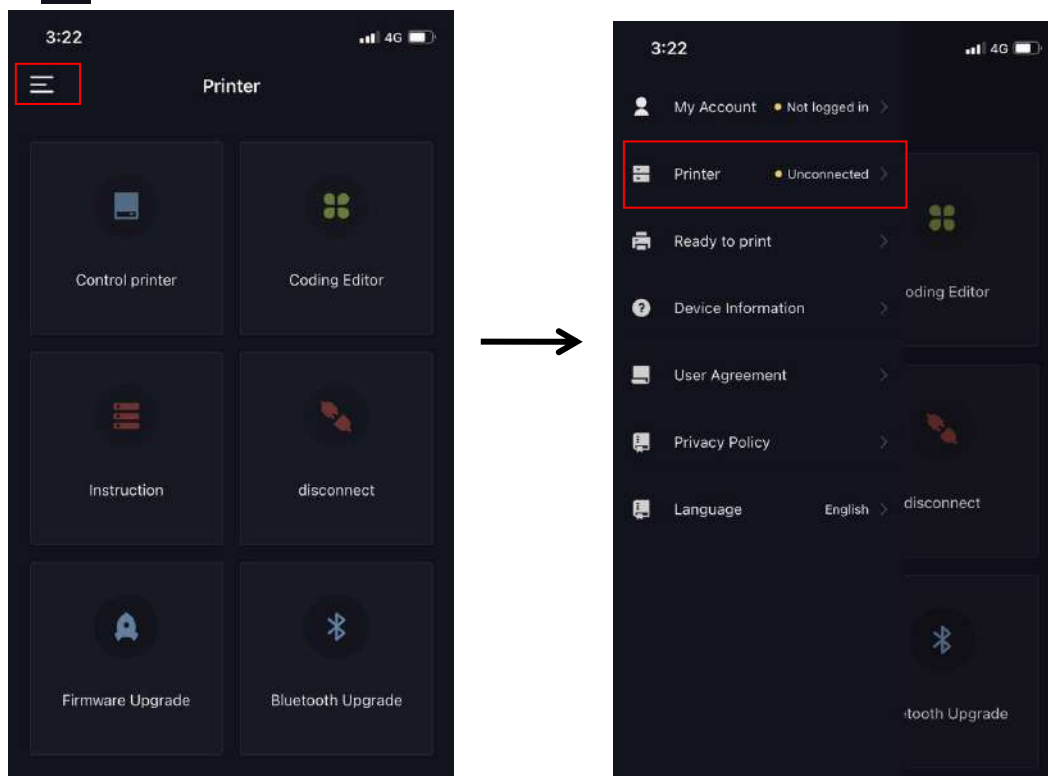
5. Find the App icon of DC24A in the device desktop, so the installation is complete.



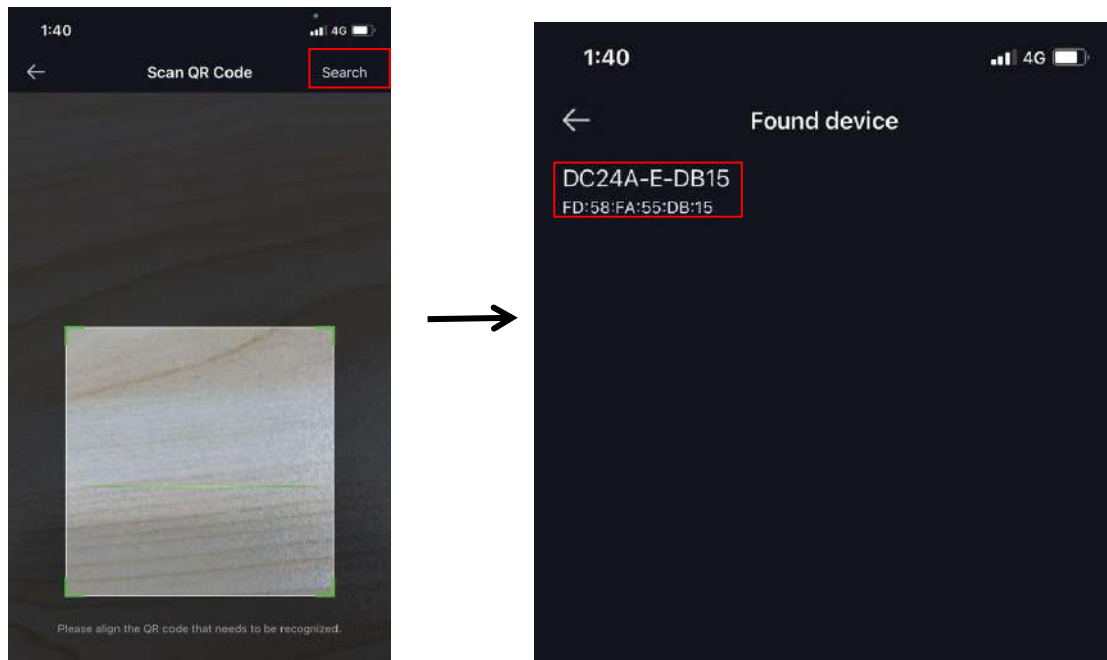
2 BASIC OPERATING INSTRUCTIONS

2.1 Connect the device to the DC24A overprinter via Bluetooth

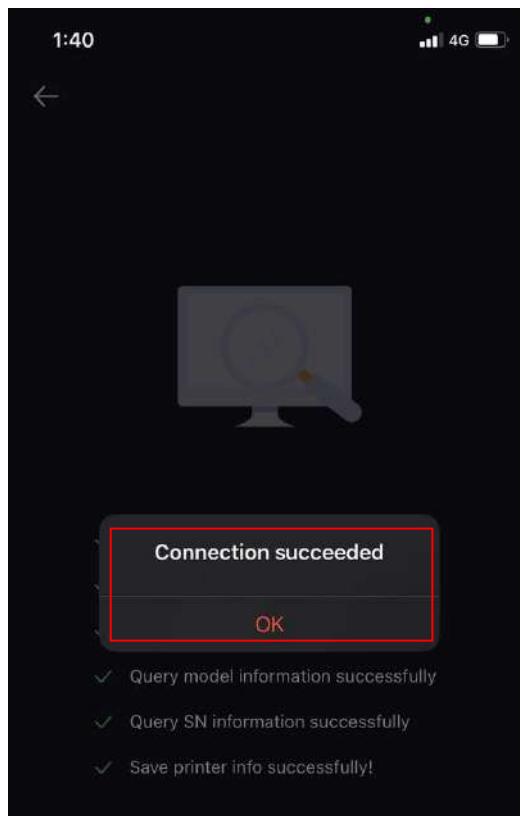
1. Turn on the Bluetooth function of the device.
2. Open the App, and it will show the interface as the left screenshot below. Click the "☰" in the upper left corner, and then click "Printer Unconnected".



2. Click "search" in the upper right corner to find the overprinter you want to connect, such as "DC24A-E-DB15", and click it to connect.

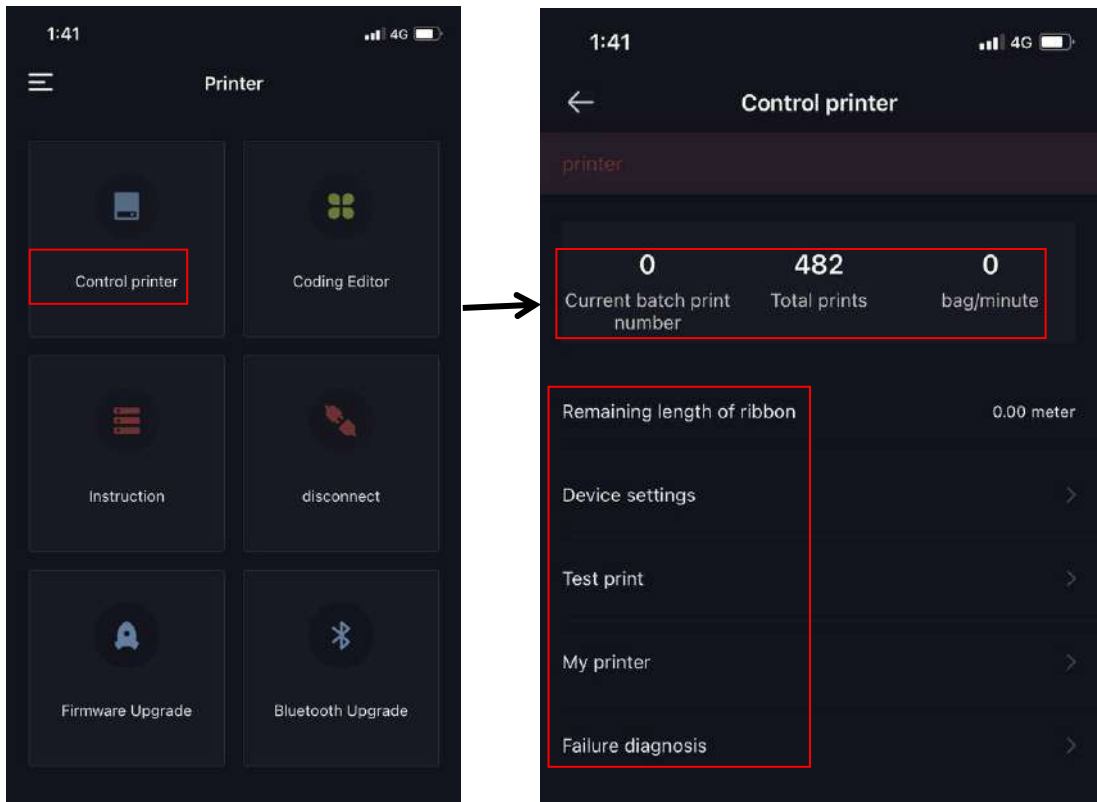


3. The device is successfully connected to the overprinter via Bluetooth.



2.2 Control printer

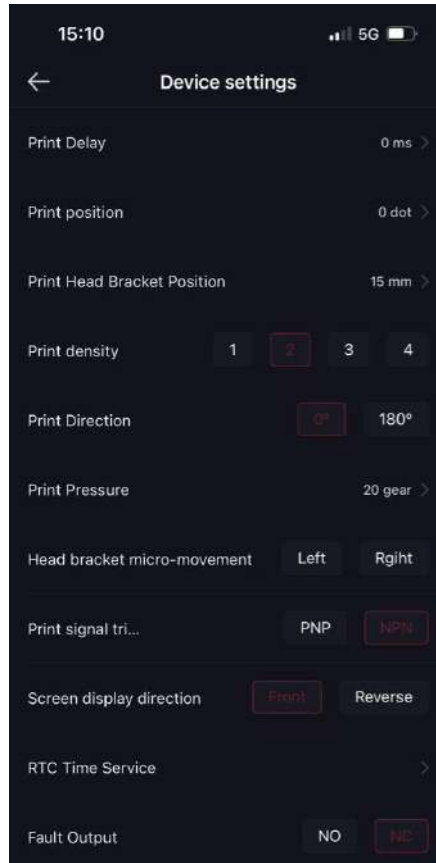
Click "Control printer" on the App home page to enter the control printer page.



1. Current batch print number: the number of prints completed after the printer is turned on.
2. Total prints: the sum of historical printing quantity of this printer.
3. bag/minute: current printing speed
4. Remaining length of ribbon: the remaining length of the current carbon belt.

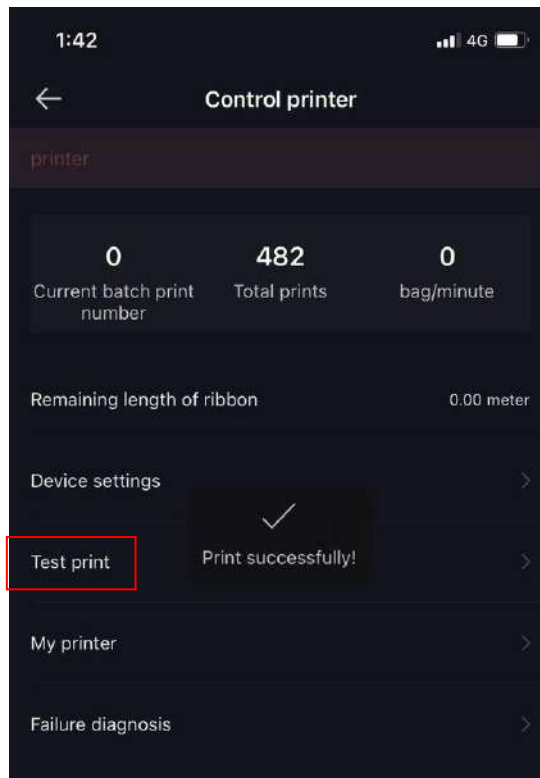
5. Device setting: various parameters of the device can be set.

Click "Device setting", select or input parameters as required, and click "finish" or "confirm" to set successfully.

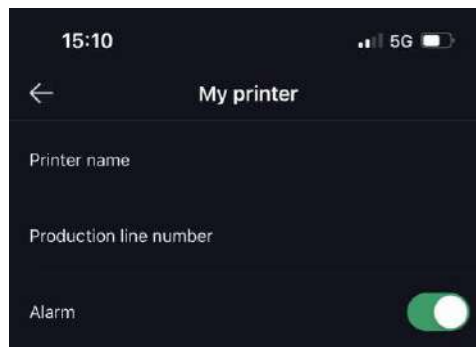


- ① Print delay: the settable range is 0 ~ 9999 milliseconds
- ② Print position: the settable range is 0 ~ 104 dot
- ③ Print head bracket position: the settable range is 5 ~ 15mm
- ④ Print density: 1 ~ 4 gears can be set (2 gears by default)
- ⑤ Print direction: 0° and 180° can be selected
- ⑥ Printing pressure: 0 ~ 64 gears
- ⑦ Head bracket micro-movement: you can select inching left or right
- ⑧ Print signal trigger mode: select PNP or NPN mode as required
- ⑨ Screen display direction: refers to the screen display direction on the code printer. You can select front and reverse
- ⑩ RTC time service: the system time of the printer can be set
- ⑪ Fault output: NO and NC can be selected

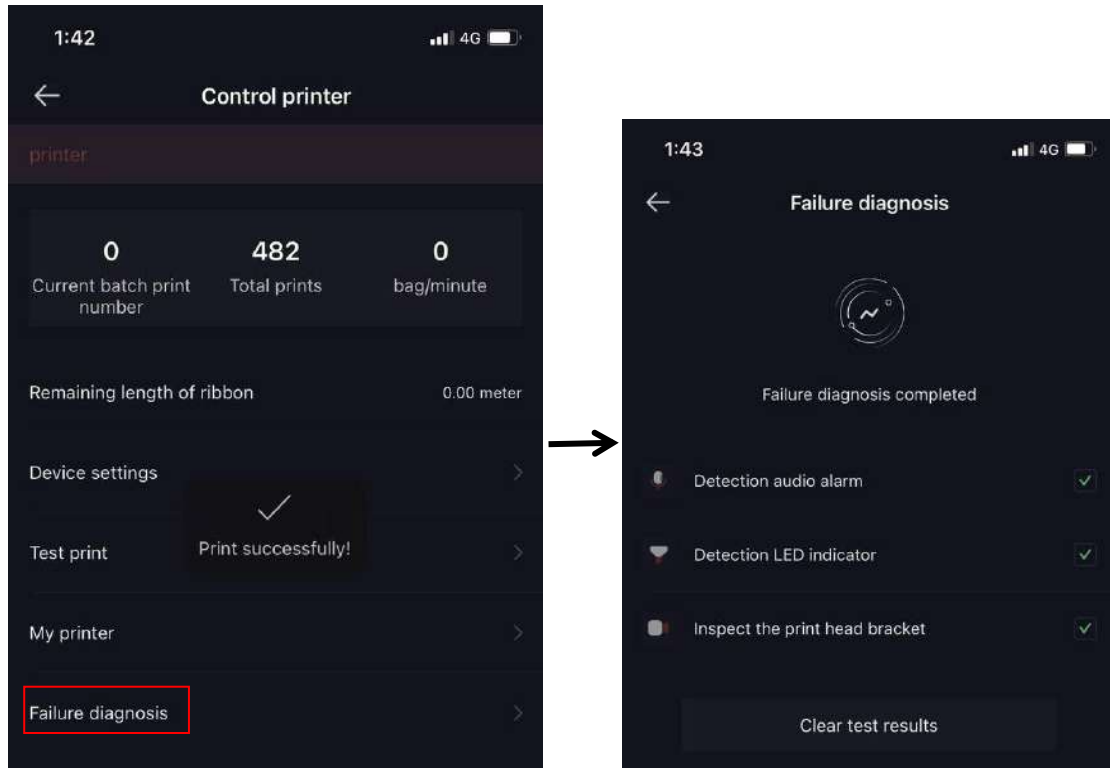
6. Click "Test print" to test and print the edited template template.



7. Click "My printer" and can set printer name, production line number and alarm.



8. Click "failure diagnosis" to enter the mode of diagnostic code printer, and the diagnosis time is about 10 seconds.



2.3 Coding editor

Click "Coding editor" on the App home page to create, edit and save the label templates .

Template width: 24.0 mm

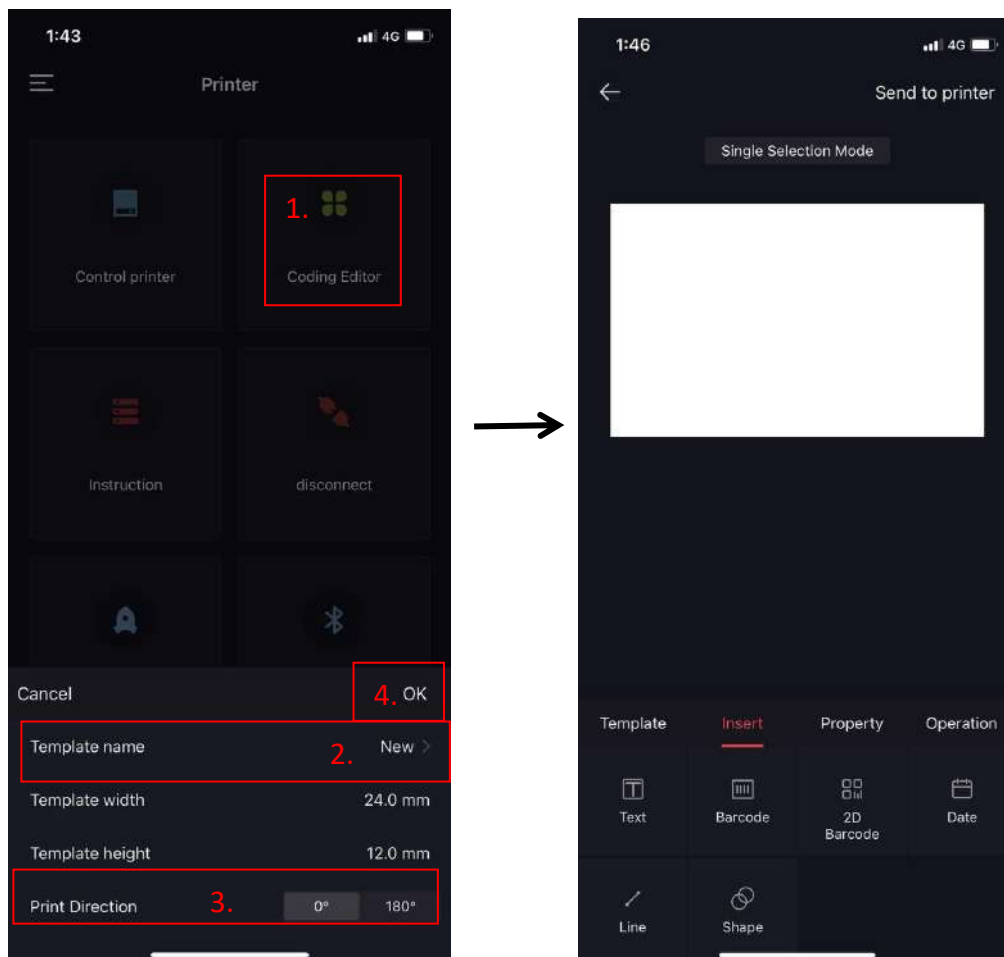
Template height:

DC24A: 12.0 mm

DC24A-E: 15.0 mm

Print direction: 0° or 180°

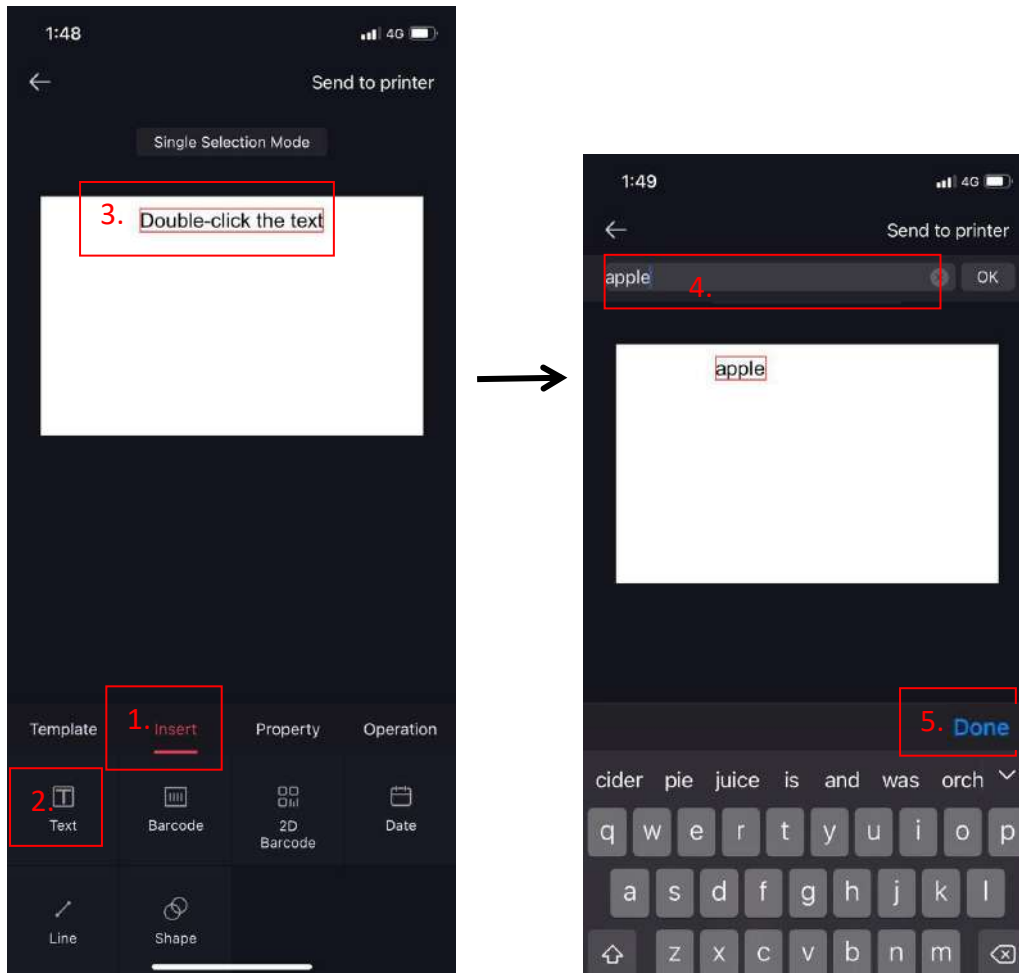
1. Click "Coding editor" -> "new" to input the template name -> select the print direction -> click "OK" -> enter the template editing page.



Note: Barcode and 2D barcode functions are only available on DC24A-E.

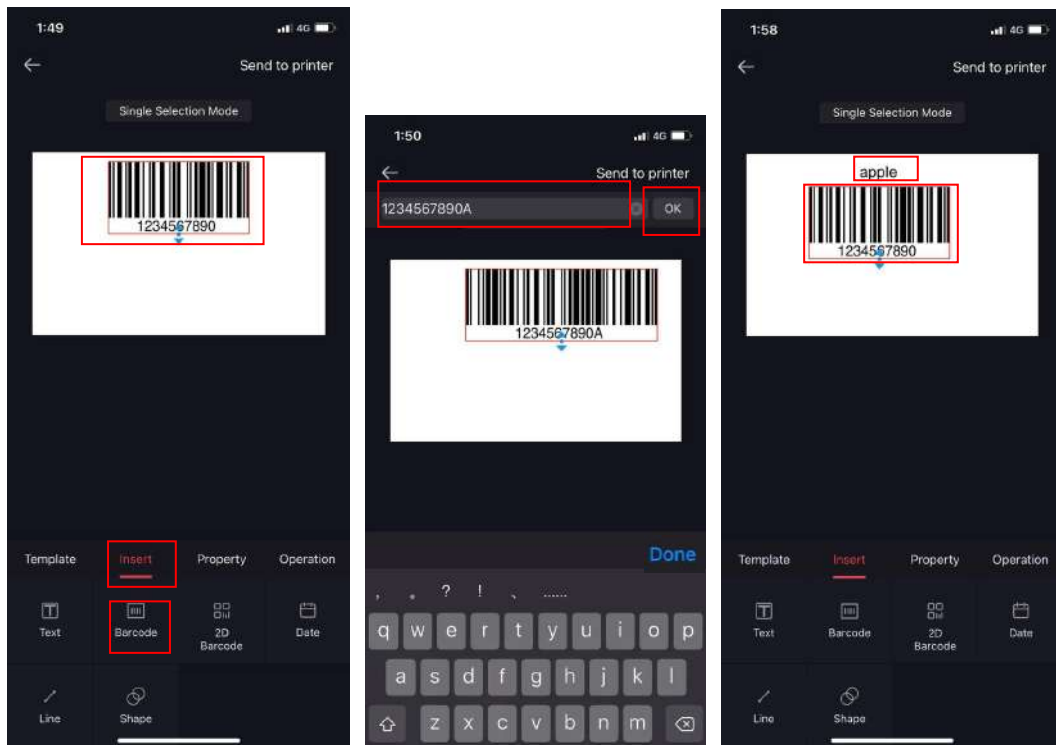
1) Insert text:

Click "Insert" -> "Text" -> double click at the position shown in the figure -> input text, such as "apple" -> "Done".



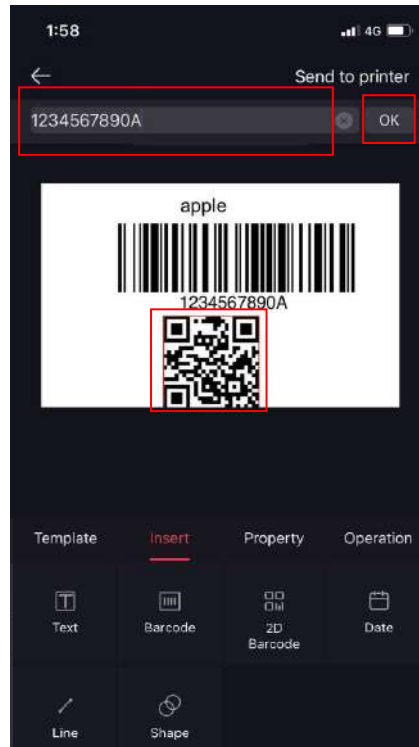
2) Insert barcode:

Click "Insert" -> click "Barcode" -> double click the barcode position -> edit the barcode content (input the required content in the upper bar box), such as "1234567890A" -> click "OK". (You can drag the blue two-way arrow to adjust the height of the barcode and drag the barcode to prevent the previously set information from being obscured.)



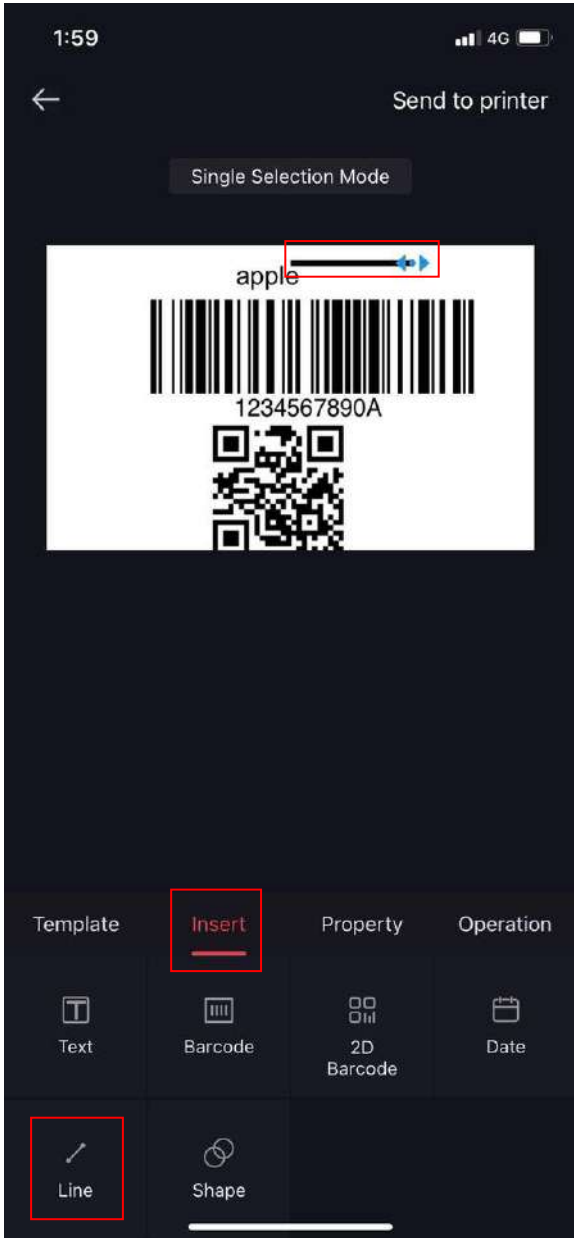
3) Insert 2D Barcode:

Click "Insert" -> click "2D Barcode" -> double click the 2D Barcode position -> edit the 2D Barcode content (input the required content in the upper bar box), such as "1234567890A" -> click "OK".



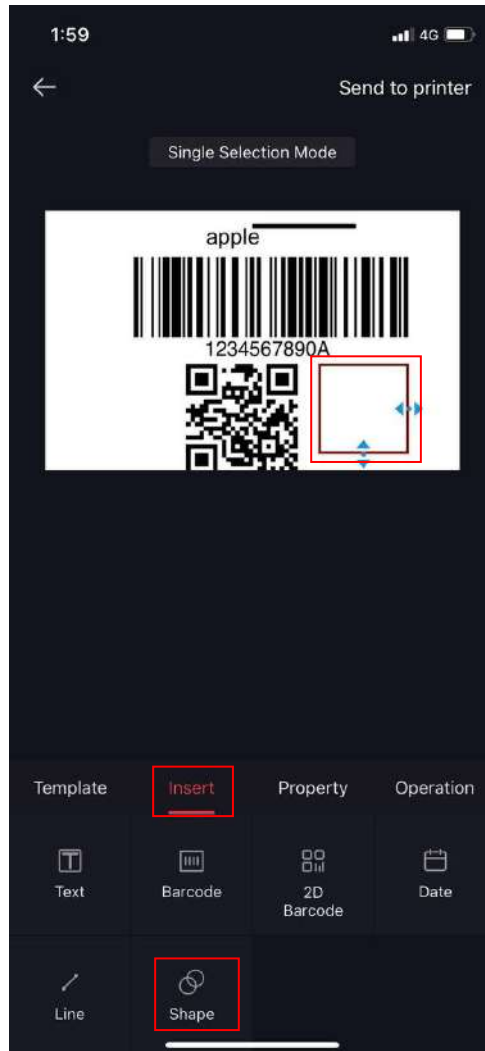
4) Insert line:

Click "Insert" -> Click "line" -> drag the blue two-way arrow on the line to lengthen or shorten it.



5) Insert shape (currently only box insertion is supported):

Click "Insert" -> Click "Shape" -> drag the blue two-way arrow on the rectangle to adjust its length and width.



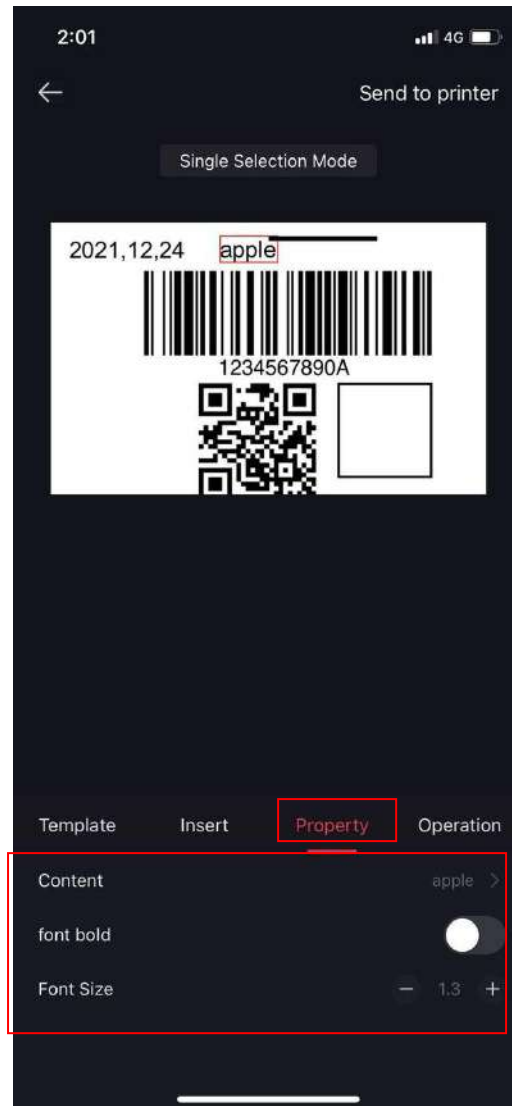
6) Insert date:

Click "Insert" -> "Date" to insert the preset date of the printer system.



7) Click "Property" to edit the template content.

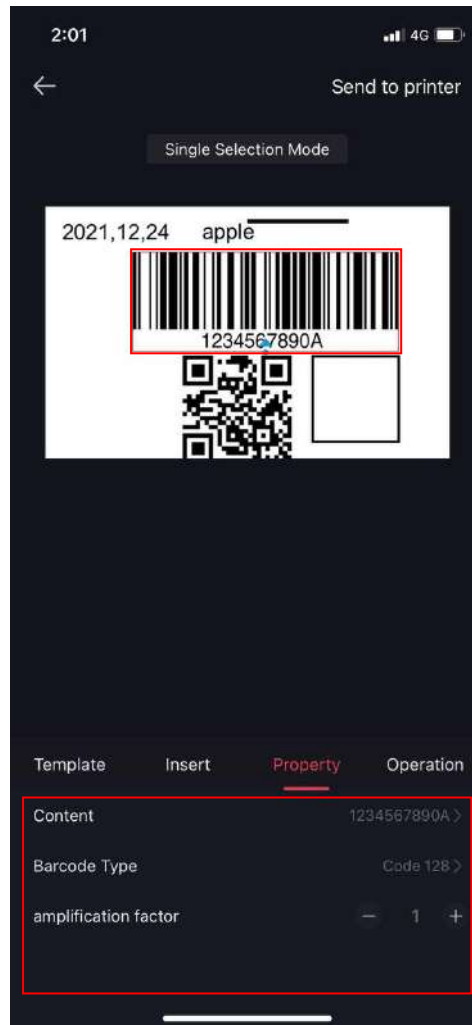
① Select the text you want to edit, and edit it as follows: click "Content" to re-input the text content; enable or disable the "font bold"; set the "Font size" (max. 7.5).



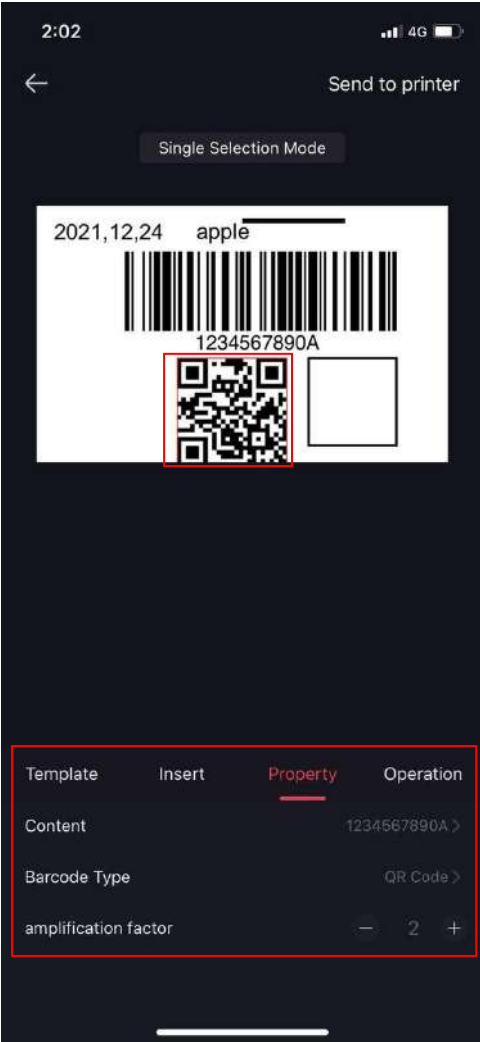
② Select the line to adjust the line thickness.



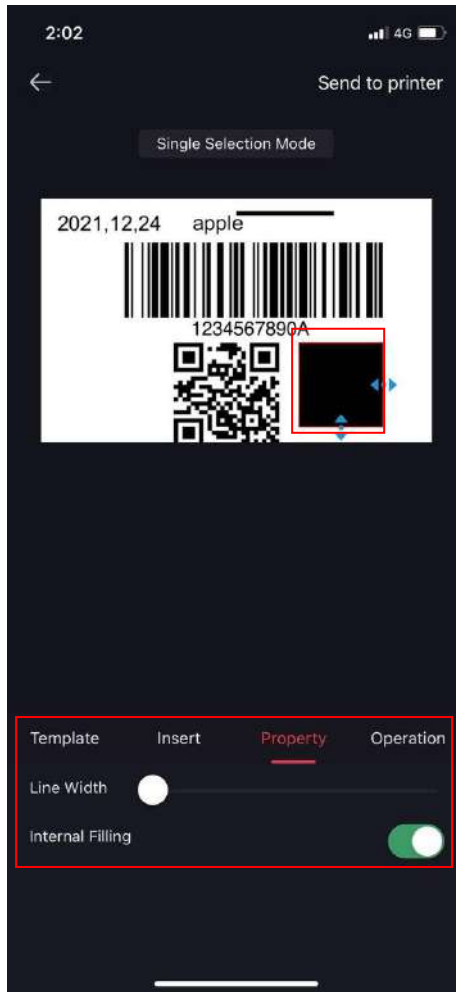
- ③ Select the barcode to edit: "Content" (re-input the barcode content); "Barcode type" (Code 128, Code 39, Code 93, CODEBAR, EAN-8, EAN-13, UPC-A, UPC-E) and "amplification factor" (1 ~ 13).



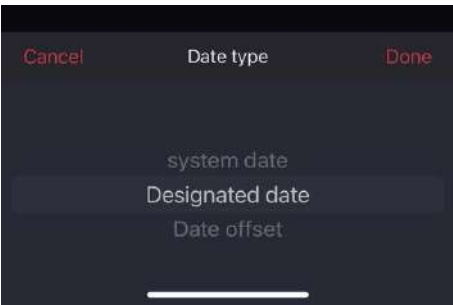
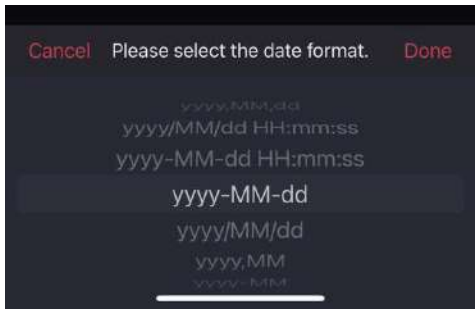
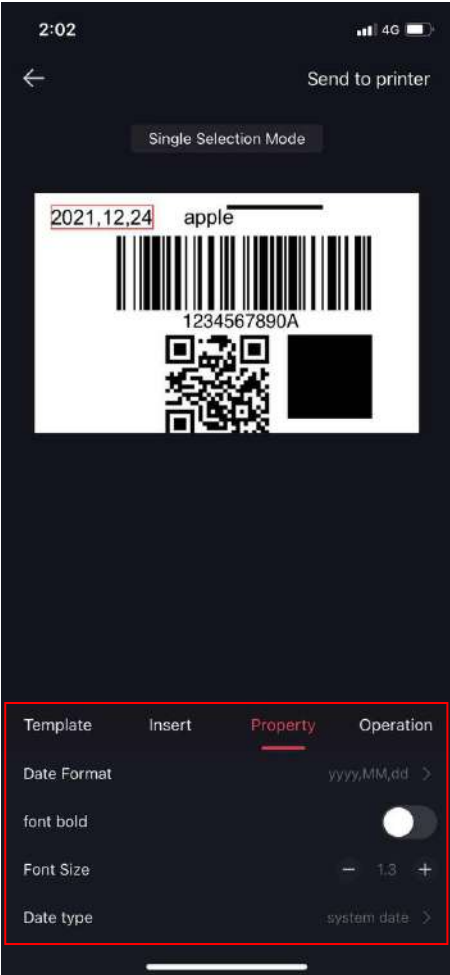
④ Select the QR code to edit: "Content" (re-input the QR code content); "Barcode type" (QR code) and "amplification factor" (1 ~ 10)



- ⑤ Select the rectangle to edit: “Line width” (adjust the line thickness); “Internal filling” (enable or disable).

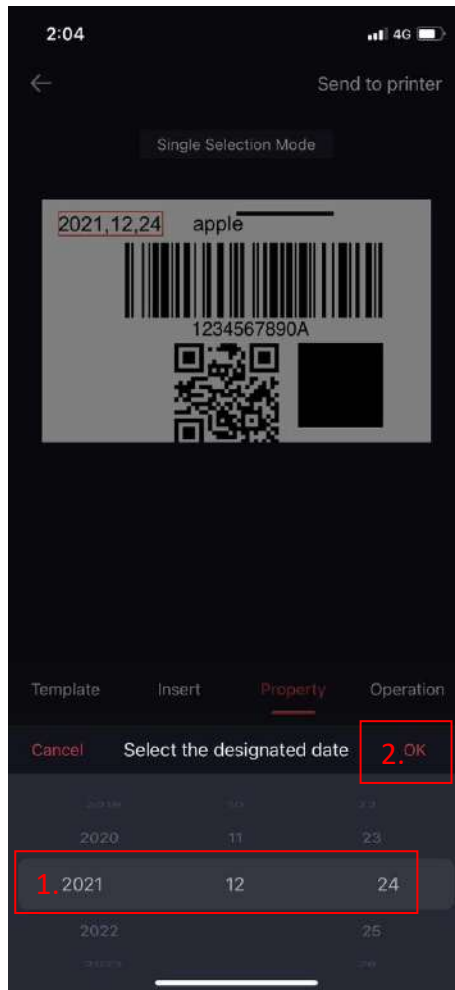


⑥ Select the date to edit: “Date format” (year / month / day / week / hour / minute / second); “Font bold” (enable or disable); “Font size”; “Date type” (system date / specified date / offset date).



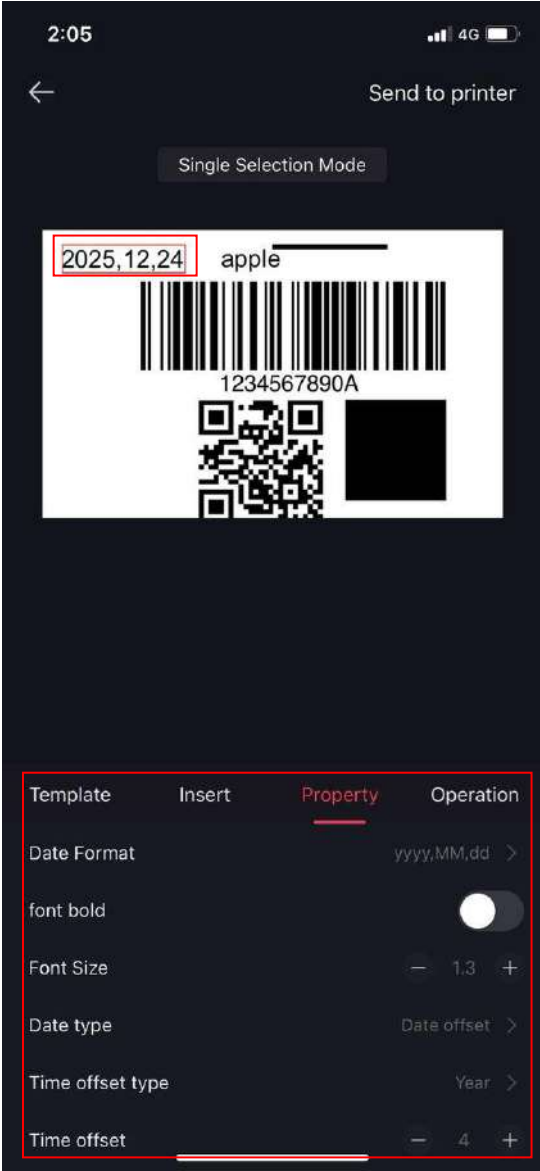
Example of designated date setting:

Scroll the time bar to select the time, and then click "OK" to complete the setting.

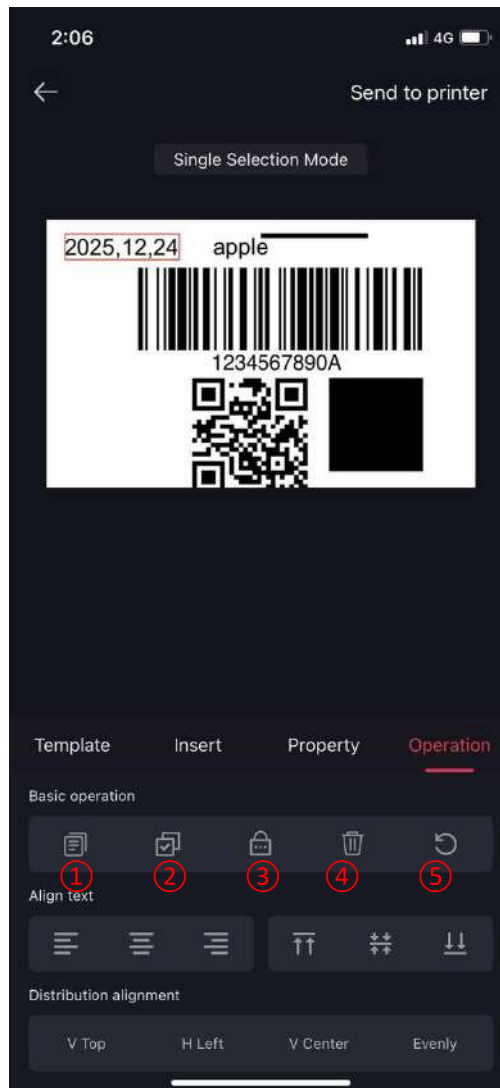


Example of time offset setting:

Select "year" on "time offset type" and set "time offset" to "4", and the original date "2021, 12, 24" will be changed to "2025, 12, 24".



8) Click "operation" to further edit the label content.



· Basic operation

① Copy: in single selection mode, select any text/line/barcode/QR code/box, then click the “copy” icon to copy the selected text/line/barcode/QR code/box.

② Single/multiple selection mode: click this icon to select single selection mode (only one object in the label can be selected) or multiple selection mode (multiple objects in the label can be selected at the same time).

③ Lock: in single/multiple selection mode, select the object in the label first, and then click this icon to make it cannot be edited or moved. Click this icon again to unlock.

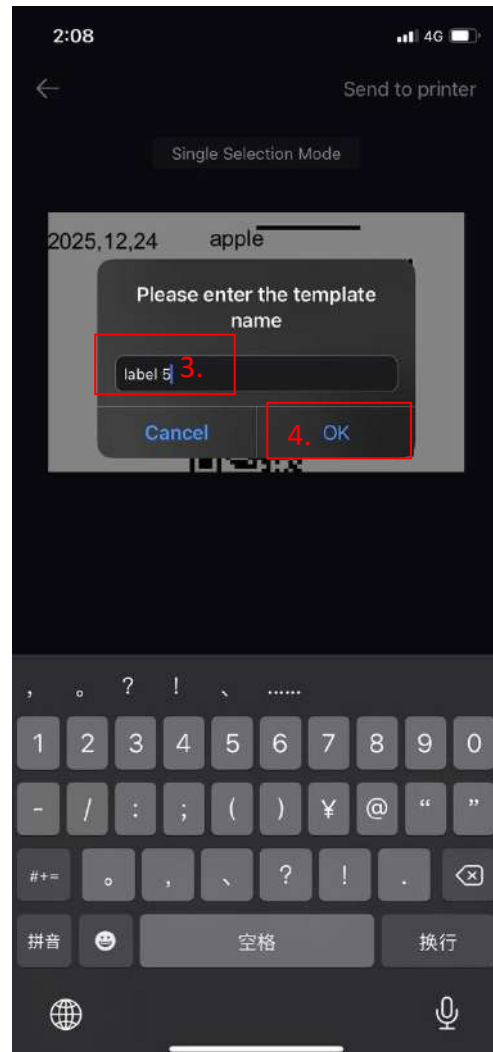
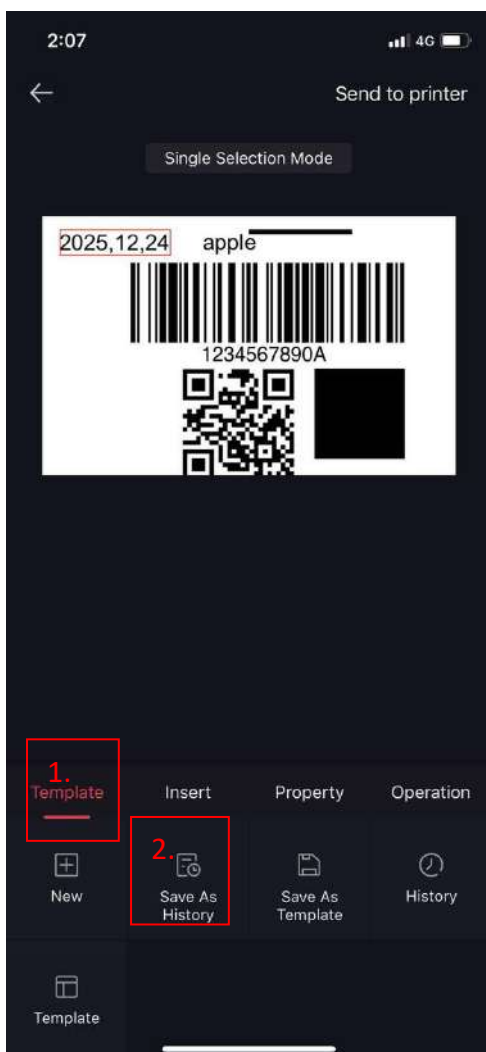
④ Delete: in single/multiple selection mode, select the object in the label first, and then click this icon to delete it.

⑤ Rotate: in single mode, select the object in the label first, and then click this icon to rotate it 180°.

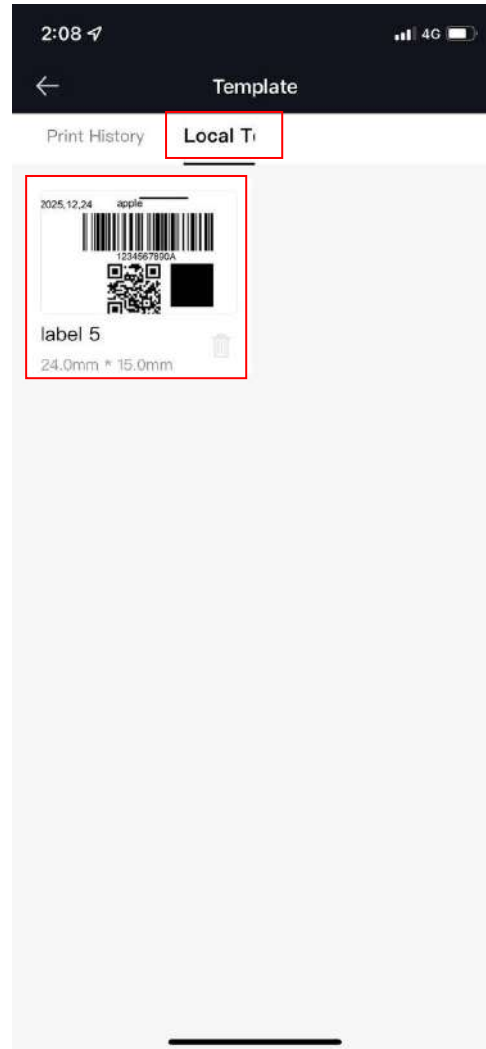
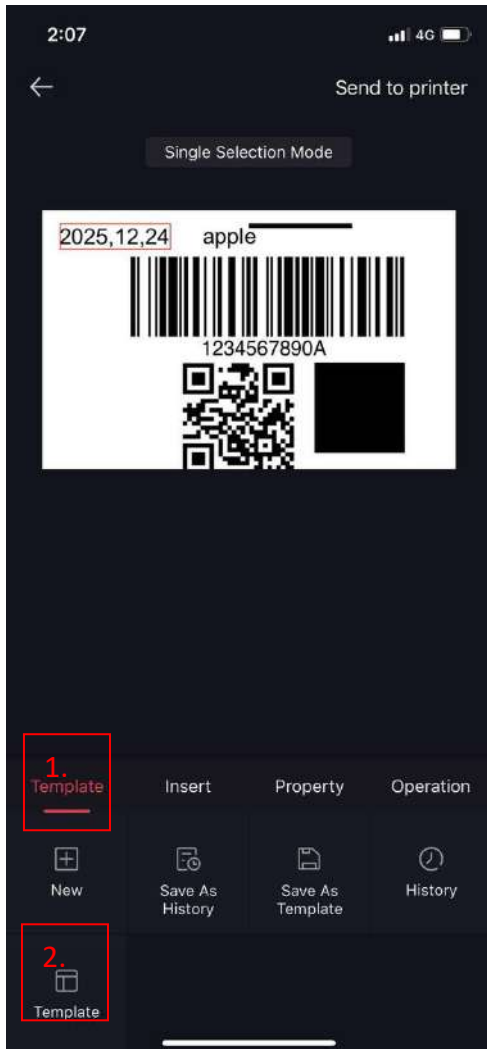
· Align text & Distribution alignment

In the multiple selection mode, select more than two texts/lines/barcodes/QR codes/boxes, then click the corresponding icons to align them.

2. After editing the template, click "Template" -> "Save as template" -> input the template name (e.g. label 5) -> click "OK" -> Save successfully.

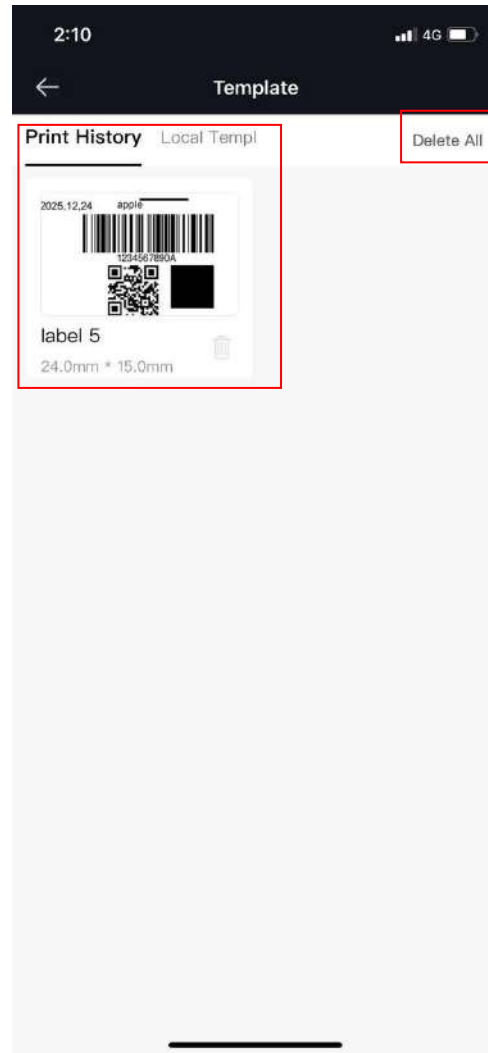
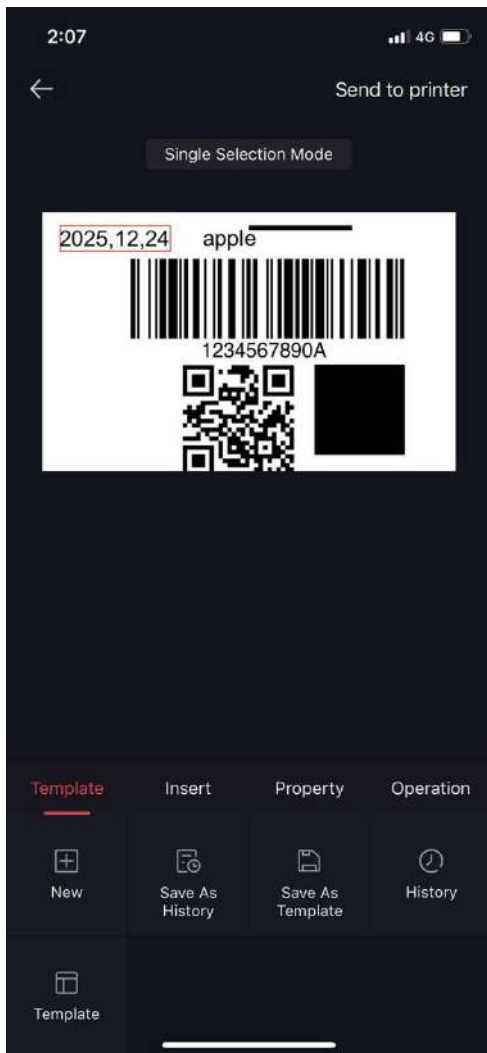


3. In "template" -> "template", you can view the saved label template, select the template you need, such as "label 5", and click "Send to printer", then the next printed content will be "label 5".



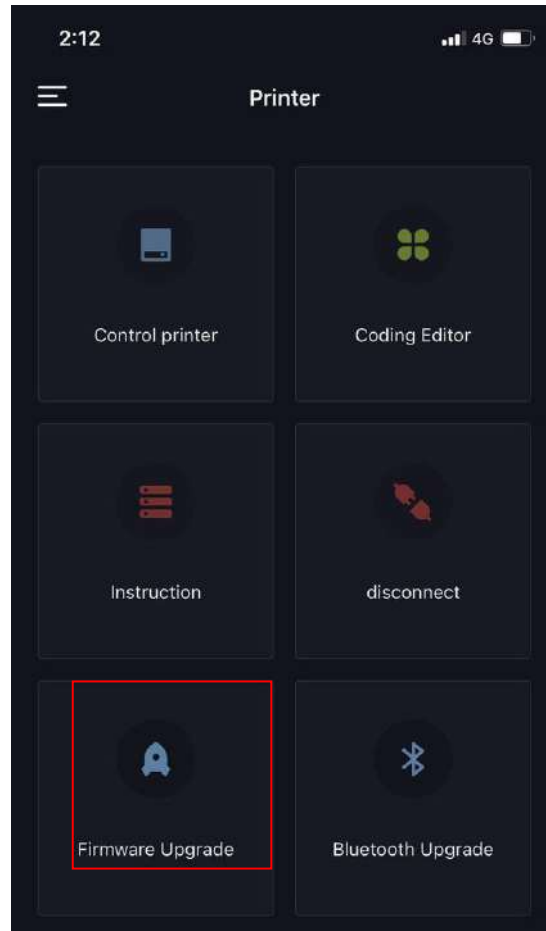


4. Click "Save as history", and the template will be visible in "History"; Click "Delete all" to clear the print history.

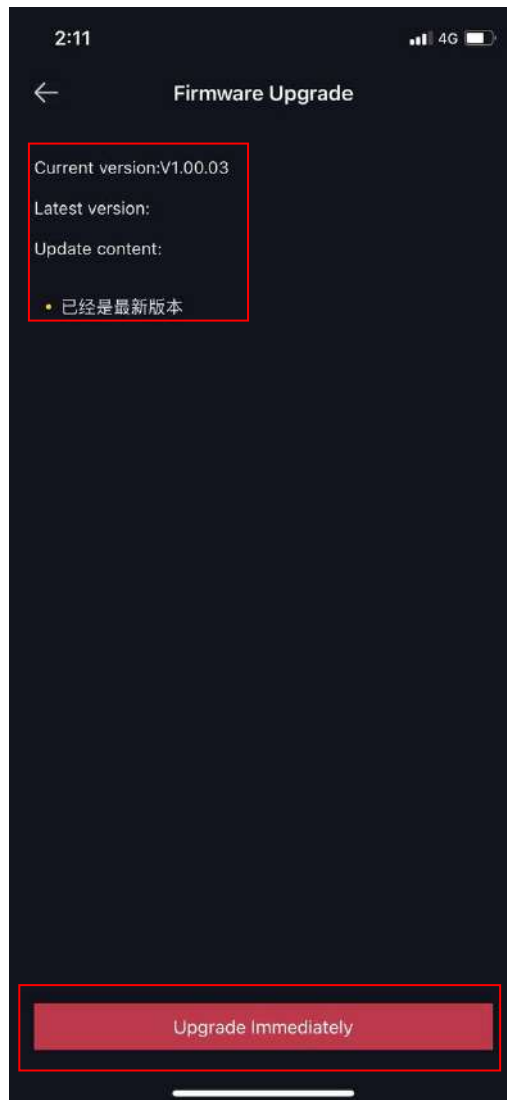


2.4 Firmware Upgrade

1. Click "Firmware Upgrade" on the home page.



2. Check whether the current version is consistent with the latest version. If not, click "Upgrade immediately".



Note: the latest version can be viewed only when the device is connected to the Internet.

3. If the firmware upgrade is successful, the printer will restart automatically to take effect.